



Wadham Terrace | | Plymouth | PL2 3BT

Asking price £210,000





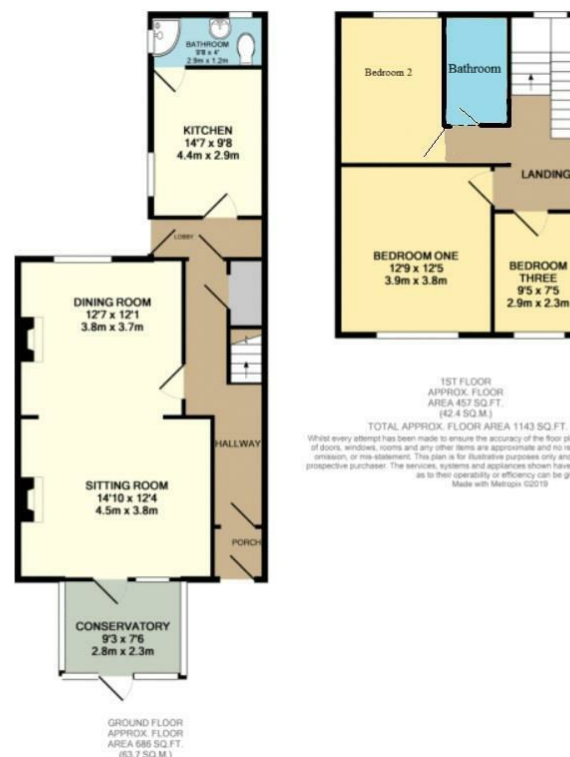
# Wadham Terrace | Plymouth | PL2 3BT Asking price £210,000

This beautifully presented three-bedroom period terraced home perfectly combines traditional charm with modern living. Having been recently decorated throughout, the property offers bright, welcoming spaces and a comfortable layout ideal for families or first-time buyers alike.

Upon entering, you are greeted by a spacious hallway leading to two generous reception rooms. To the front, a formal dining room provides the perfect setting for family meals or entertaining guests. To the rear, the living room offers a cosy and relaxing space, featuring large windows and direct access to the conservatory, which fills the room with natural light and provides a tranquil spot to enjoy views of the garden all year round.

From the living room, the property flows seamlessly into a long, well-designed kitchen that stretches across the rear of the house. This impressive kitchen offers ample workspace, storage, and room for appliances,

- 3 Bedroom Property
- Downstairs WC
- Close to City Centre
- Seperate Dinning Room
- Conservatory
- Character Features
- Front and Rear Garden
- Long Stretching Kitchen
- Double Glazing & Central Heating
- Recently Decorated



Energy Efficiency Rating		
	Current	Potential
Very energy efficient - lower running costs		
(92 plus) <b>A</b>		
(81-91) <b>B</b>		<b>84</b>
(69-80) <b>C</b>		
(55-68) <b>D</b>	<b>60</b>	
(39-54) <b>E</b>		
(21-38) <b>F</b>		
(1-20) <b>G</b>		
Not energy efficient - higher running costs		
<b>England &amp; Wales</b>	EU Directive 2002/91/EC	

Drake Circus 1 Charles St  
Plymouth  
PL1 1EA  
07392818622  
tyler.copp@coppestates.co.uk  
www.coppestates.co.uk